

## SRC-TS SERİSİ TEKNİK ÖZELLİKLER

### KİLİTLEME ÜNİTESİ

		SRC 30-TS	SRC 40-TS	SRC 60-TS	SRC 90-TS	SRC 130-TS
Kilitleme Kuvveti	kN	300	400	600	900	1300
Mengene Mesafesi	mm	155	245	270	350	380
Kolonlar Arası Mesafe (Y x D)	mm	245 x 195	260 x 260	310 x 310	370 x 370	420 x 420
Plaka Boyutları (Y x D)	mm	365 x 315	405 x 405	480 x 470	580 x 560	640 x 640
Maksimum Kalıp Kalınlığı	mm	260	300	320	380	450
Minimum Kalıp Kalınlığı	mm	80	100	120	150	160
İtici Mesafesi	mm	40	65	70	100	130
İtici Kuvveti	kN	13	25	22	39.6	39.6

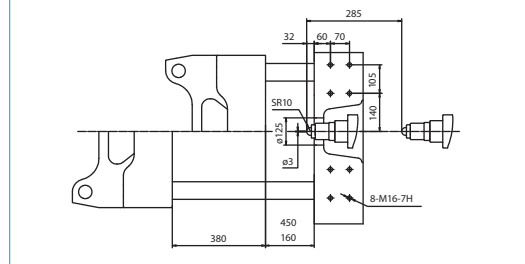
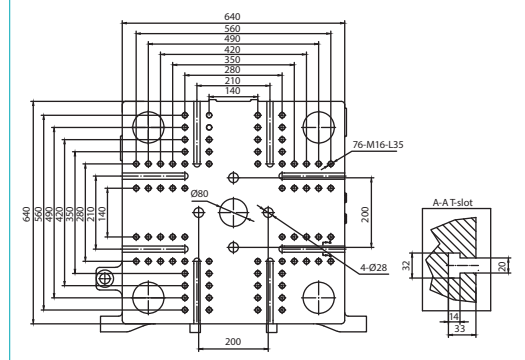
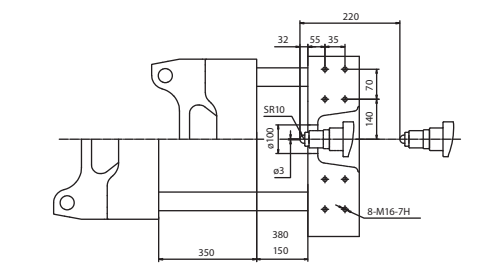
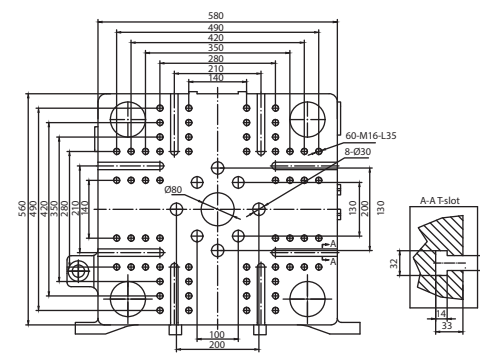
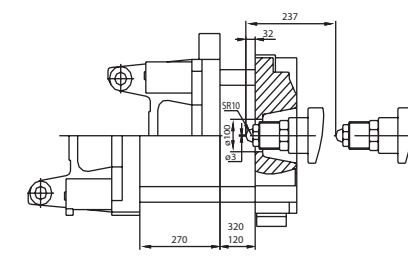
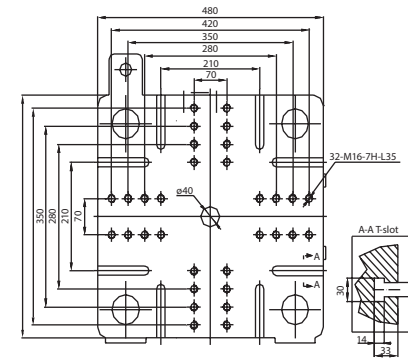
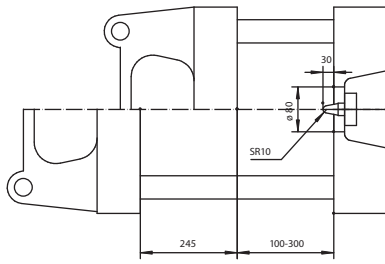
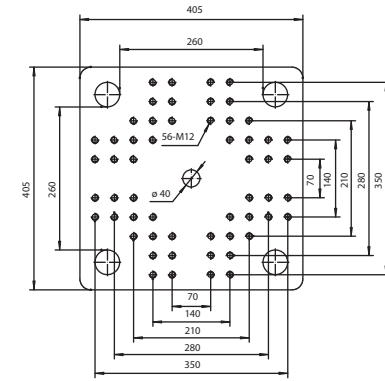
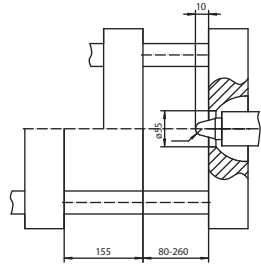
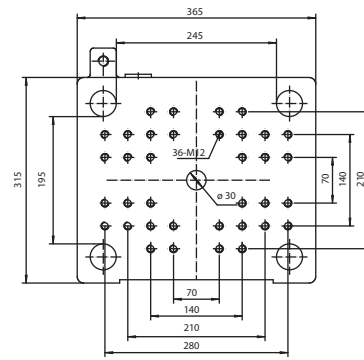
### ENJEKSİYON ÜNİTESİ

		60		110		160			350				470		
		A	B	A	B	A	B	C	A	B	C	D	A	B	C
Vida Çapı	mm	22	25	27	30	26	30	34	32	35	38	42	38	42	45
Vida UD Oranı	L/D	17.7	15.5	18.4	16.5	24	21	19	23	21	19.3	17.5	23.2	21	19.6
Enjeksiyon Hacmi	cm <sup>3</sup>	30	38	55	68	66	88	113	136	163	193	235	227	277	318
Enjeksiyon Ağırlığı (PS)	g	27	34	50	62	60	80	103	124	148	174	213	206	252	289
Enjeksiyon Ağırlığı (PS)	oz	0.9	1.2	1.9	2.1	2.1	2.8	3.6	4.4	5.2	6.1	7.5	7.3	8.9	10.2
Enjeksiyon Basıncı	bar	1850	1430	2070	1680	2450	1840	1430	2630	2190	1860	1520	2080	1710	1480
Enjeksiyon Hızı	mm/s	120	120	120	120	120	120	120	99	99	99	99	100	100	100
Enjeksiyon Kapasitesi (PS)	g/s	25	32	50	62	58	77	99	73	87	102	125	104	127	145
Mal Alma Kapasitesi (PS)	g/s	2.6	3.2	4.3	5.9	7	9.3	11.9	8	10.9	12.8	13.6	10.8	14.5	18
Enjeksiyon Mesafesi	mm	80		90		125			169				199		
Vida Hızı	rpm	0 - 165		0 - 200		0 - 220			0 - 220				0 - 200		

### GENEL BİLGİLER

Maksimum Çalışma Basıncı	bar	140	160	175	160	160
Servo Motor Gücü	kW	7.5	11	8.6	18.7	18.7
Isıtma Gücü	kW	2.6	3.2	7.1	8.45	13.1
Makine Ölçüleri (U x G x Y)	m	2.80 x 0.86 x 1.35	3.1 x 1.10 x 1.4	3.9 x 1.04 x 1.78	4.18 x 1.21 x 1.94	4.52 x 1.28 x 2.45
Hidrolik Yağ Kapasitesi	L	85	95	160	200	250
Makine Ağırlığı	t	1	1.65	2.5	3.6	4.4

### PLAKA BOYUTLARI



### MAKİNE BOYUTLARI

